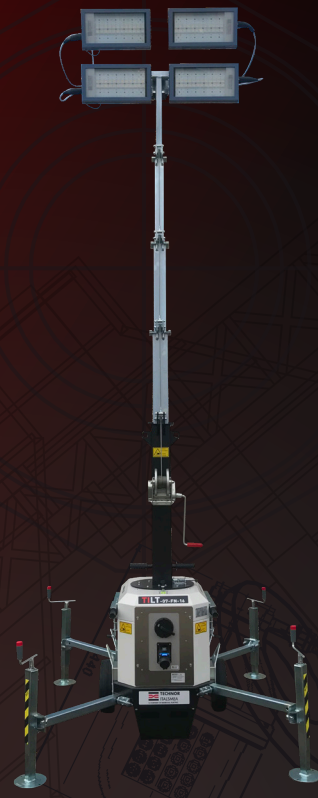




# TILT SERIES DESIGNED FOR HAZARDOUS AREAS

MOBILE LIGHTING TOWER SUITABLE FOR ZONE 2, 22



## Lighting wherever & whenever you need it

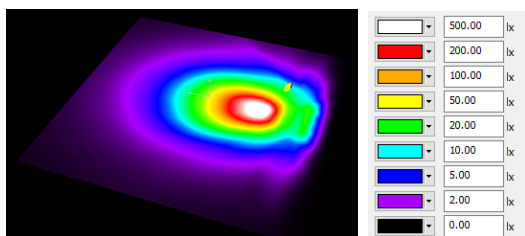
Our mobile lighting tower TILT Series is the ideal solution for construction, installation & maintenance companies in sites where an electricity network or a generator is provided and an explosive atmosphere may be present.

In particular, TILT Series is designed to guarantee the optimal working conditions for:

- Night-shift crews on construction sites with no lighting system;
- Maintenance workers operating to solve a power failure

## Excellent lighting performances

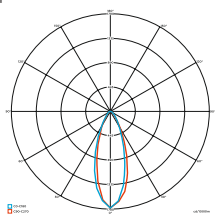
Thanks to 4x114 W LED floodlights TL2 Series in copper-free aluminium, TILT Series can illuminate more than 2,000 square meters with the mast extended up to 7 m and floodlights inclined 45° downwards.



Illuminance (lx) preview



Floodlights unit



Floodlight narrow beam

## FEATURES & BENEFITS:

ATEX application: Zone 2-22

Suitable for Gas Group: IIA, IIB, IIC

Suitable for Dust Group: IIIA, IIIB

Guaranteed luminosity: **54,800 lm**

**2,000 m<sup>2</sup>** illumination

**360°** mast rotation to orient the lighting where needed

Vertical mast extendable **up to 7 m**

Possibility to connect up to **6** units together

Compact design, easy to transport and handle on site

100% made in Italy

[technor.com](http://technor.com)

**TECHNOR**  
**ITALSMEA**

A COMPANY OF MARECHAL ELECTRIC

# EX-CERTIFIED SOLUTION

# TILT SERIES DESIGNED FOR HAZARDOUS AREAS



## ELECTRICAL & MECHANICAL FEATURES

### Mechanical features

- Thanks to 4 holes for forklift, 4 hooks for lifting and EU approved road trailer, the lighting tower is easily manageable and can be towed behind your car or transported on trucks.
- Supplied with trolley with 2 wheels and 2 retractable handles for an easy and quick handling on site.
- Provided with 4 stabilizers which make the tower resistant to strong gusts of wind up to 80 km/h.
- Vertical mast with manual lifting system: extendable up to 7 meters.
- 360° rotation of the mast helps the operator to decide easily the direction of lighting.
- Supplied with anti-fall safety pin to secure the vertical mast and spring pin for safety locking of mast rotation.

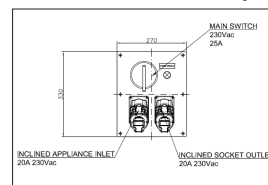
### Electrical connection

TILT Series can be connected to a power supply network or to a generator. The electrical control panel is made of Ex e enclosure EFXE Series in AISI316L stainless steel and the standard version is supplied with a voltage presence light, a selector switch 230 V AC 25 A and a single phase appliance inlet 230 V AC 20 A.



Electrical control panel

Upon request, the electrical control panels can be supplied with 1 appliance inlet and 1 inclined socket outlet for connecting up to six units in series. The devices can be provided with loop-in/loop-out or mechanical self-eject function.



Electrical control panel with appliance inlet and inclined socket outlet



Self-ejecting device

